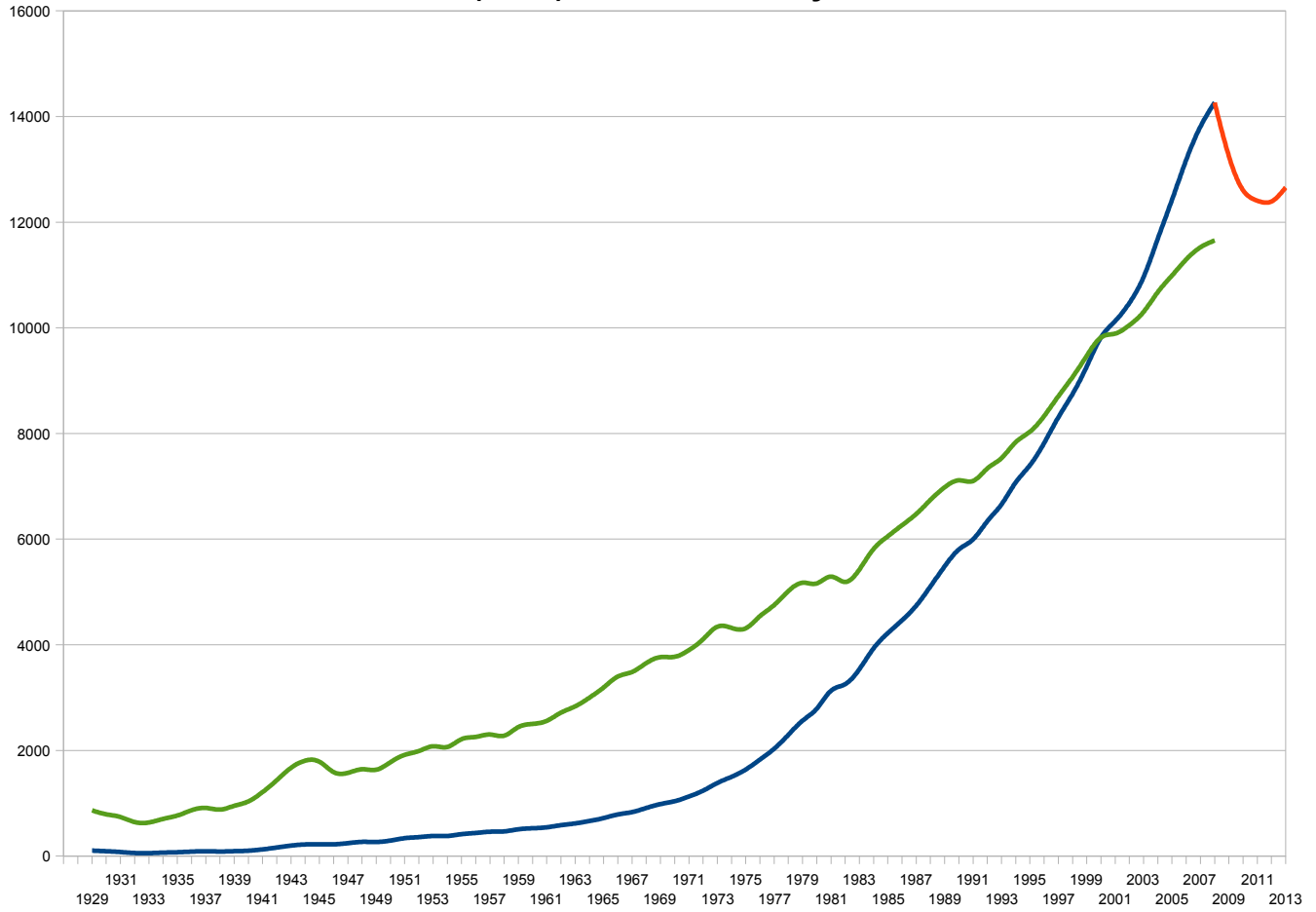


March 2009

**Continuing
Macroeconomic
Monitoring**

1 – Gross Domestic Product (GDP) Historical Analysis and Forecast



Real Values:

2009: -7.1%

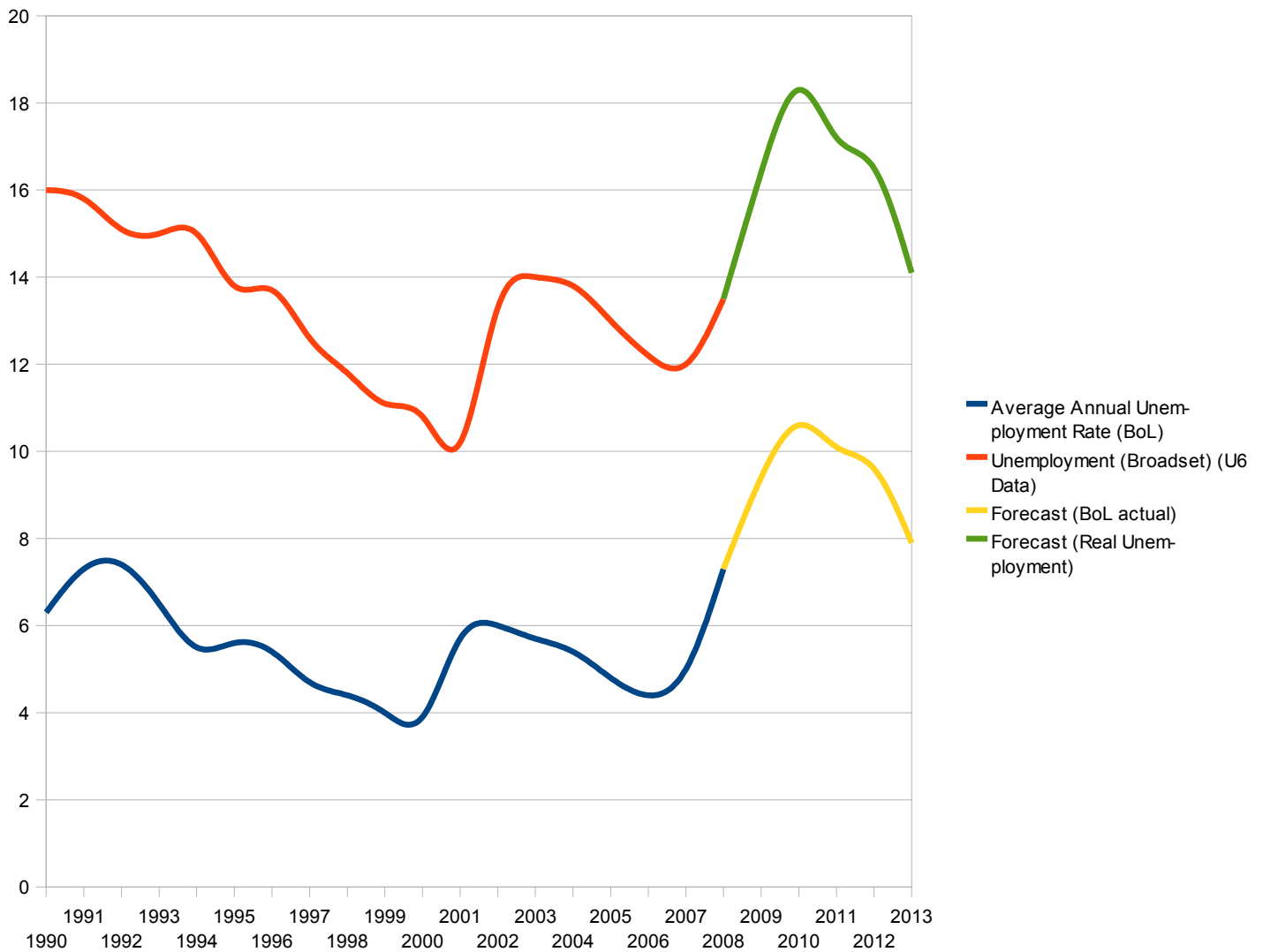
2010: -4.9%

2011: -1.6%

2012: -0.1%

2013: +2.1%

2 – Unemployment:



Real Values:

Official:

2009: 9.4

2010: 10.6

2011: 10.1

2012: 9.6

2013: 7.9

Broad set:

2009: 16.4

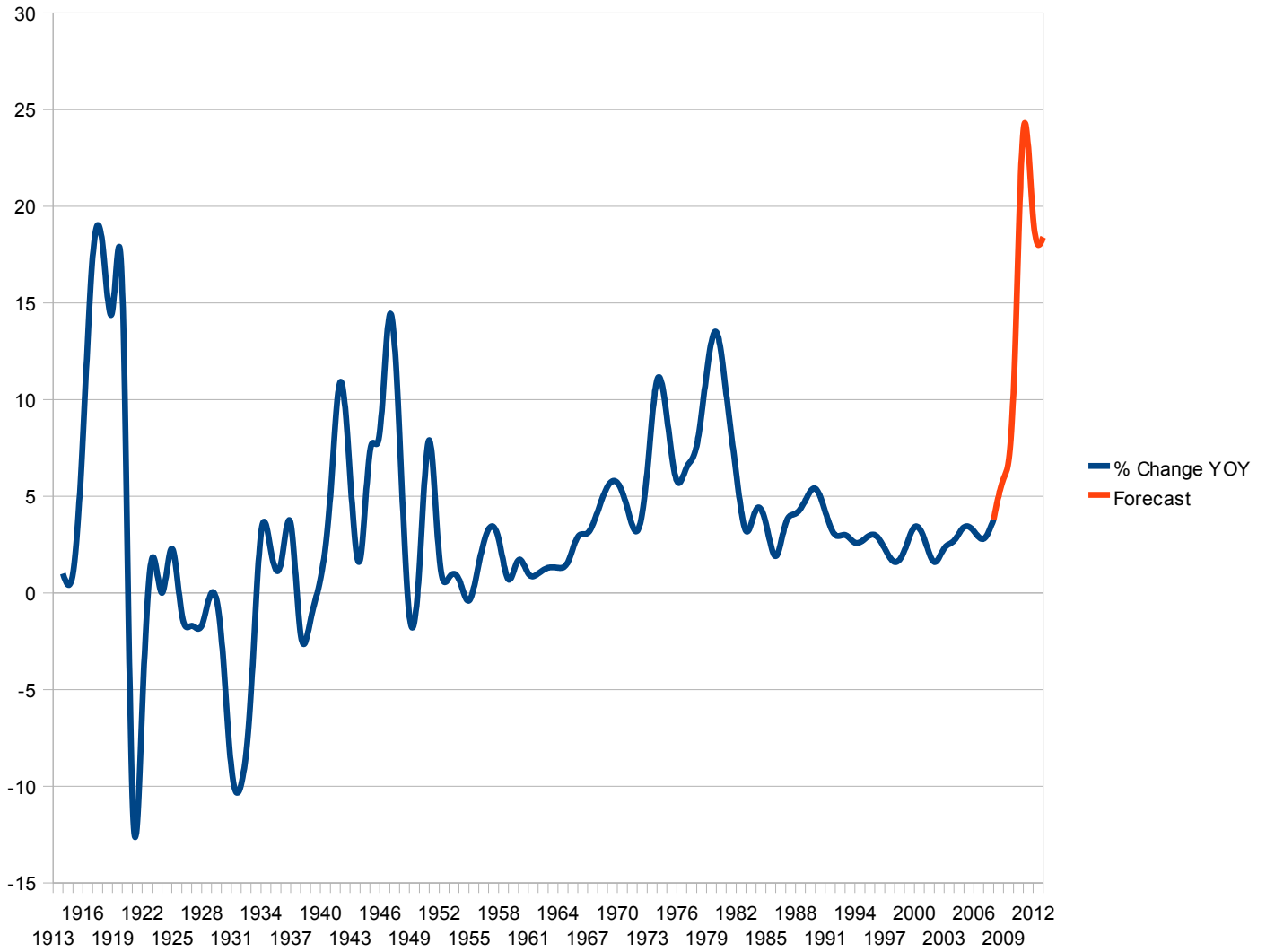
2010: 18.3

2011: 17.2

2012: 16.5

2013: 14.1

3 – Consumer Price Index Historical Analysis and Forecast:



Real Values:

- 2009: +5.9%**
- 2010: +10.3%**
- 2011: +23.9%**
- 2012: +19.4**
- 2013: +13.7**

Special Note as to Inflation (CPI) Forecast: Money Supply Data:

